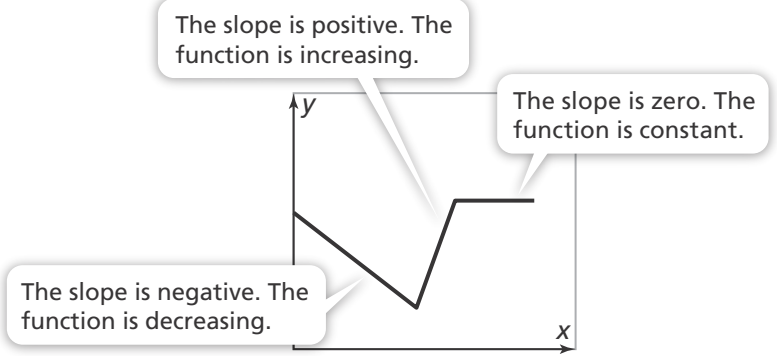
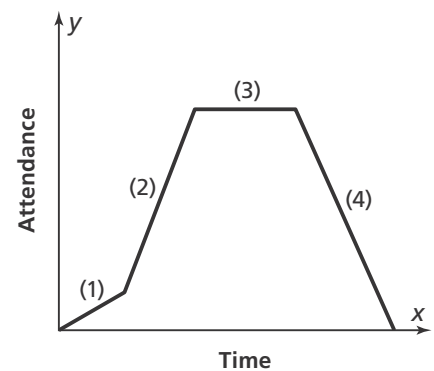


You can describe the relationship between two quantities by looking at the behavior of different intervals on the graph.



The graph on the right shows the attendance at a baseball park from an hour before the start of the game to an hour after the end of the game. Describe the attendance at the ballpark as a function of time.



1. What are the two variables?
2. What is the relationship between attendance and time at each interval?
 In intervals 1 and 2, the function is .
 In interval 3, the function is .
 In interval 4, the function is .
3. Describe the attendance at the ballpark as a function of time.

On the Back!

4. The graph shows an interval during one part of the baking process for bread in an oven. Describe the graph of the function. Which part of the baking process could this be? Explain.

